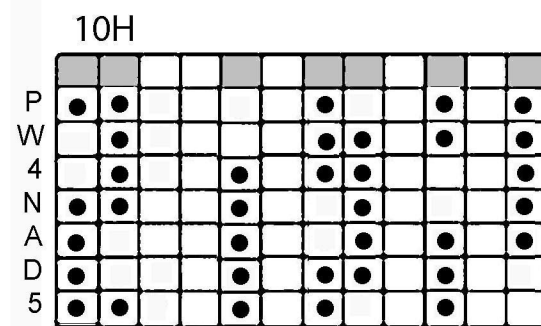
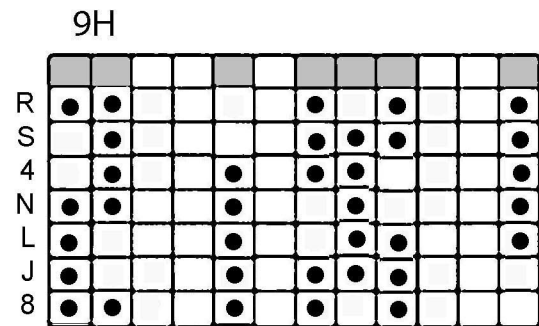
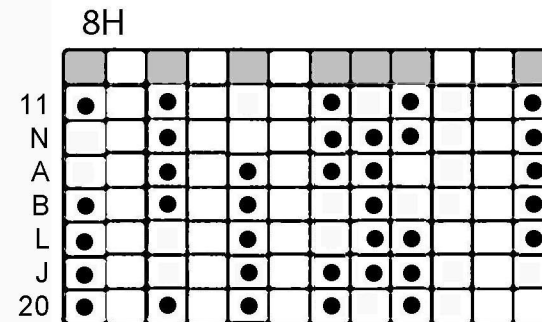
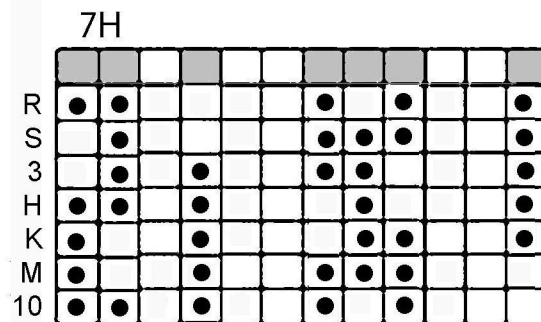
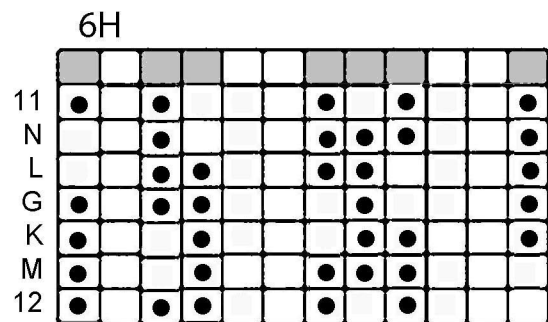
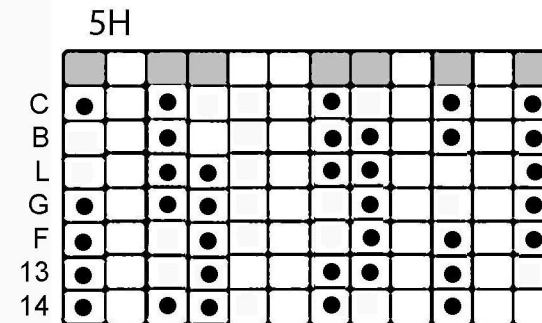
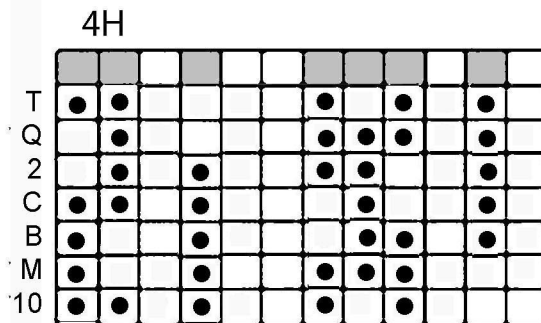
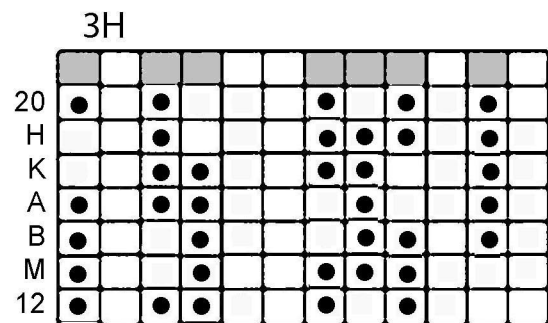
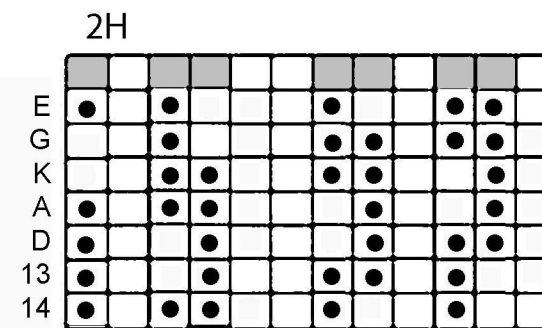
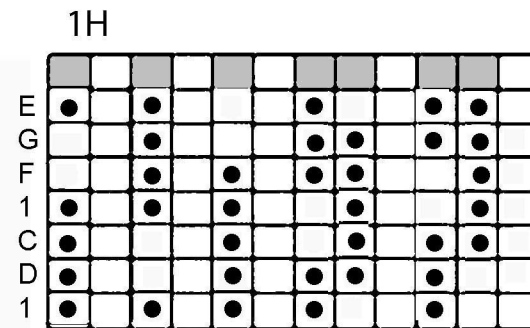
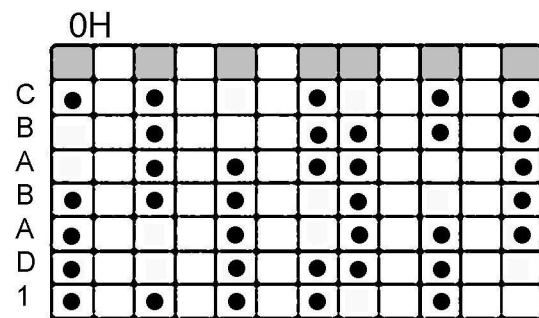


The Pentatonic Family Pt.2

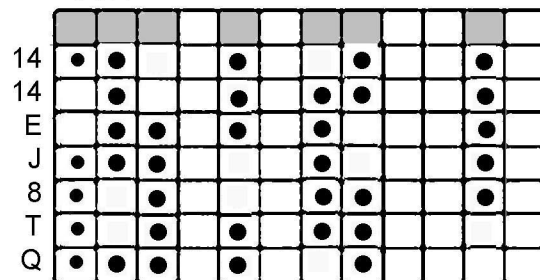
Once again staying within the realm of 12 tones [the sizes are up to you} we can look at another set of pentatonics. Before we looked at the Large and small patterns that we can define as LsLss, there is also another, which is LLsss possible with 12 pitches. If we treat our original 20 heptatonics scales likewise we get the following possibilities. Obviously the original scale will influence how well these hold together as independent scales.



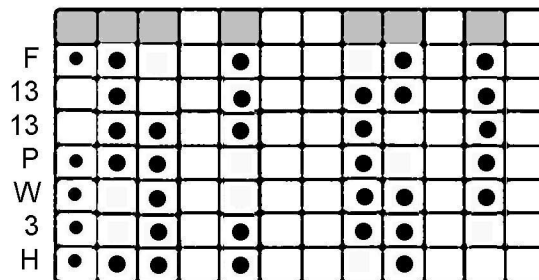
A = 4 3 2 2 1
 B = 4 1 2 2 3
 C = 4 3 2 1 2
 D = 4 2 1 2 3
 E = 4 3 1 2 2
 F = 4 2 2 1 3
 G = 4 4 1 2 1
 H = 4 4 1 1 2
 J = 4 4 2 1 1
 K = 4 1 3 1 3
 L = 4 3 1 3 1
 M = 4 3 3 1 1
 N = 4 1 1 3 3
 P = 5 3 2 1 1
 Q = 5 1 1 2 3
 R = 5 2 3 1 1
 S = 5 1 1 3 2
 T = 5 2 2 2 1
 W = 5 1 2 2 2
 U = 5 1 2 1 3
 V = 5 3 1 2 1
 X = 5 1 1 1 4
 XX = 5 4 1 1 1
 Y = 5 2 1 3 1
 YY = 5 1 3 1 2

L L S S S PENTATONICS

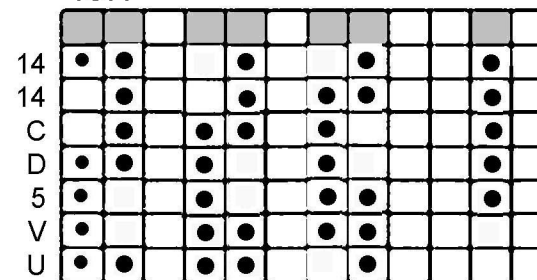
11H



12H



13H



OF OCCUR

A = 6 - 0

B = 6 - 0

C = 4 - 2

D = 4 - 2

E = 2 - 2

F = 2 - 2

G = 4 - 0

H = 2 - 2

J = 2 - 2

K = 4 - 0

L = 4 - 0

M = 4 - 2

N = 4 - 2

P = 1 - 2

Q = 1 - 2

R = 2 - 2

S = 2 - 2

T = 1 - 2

W = 1 - 2

U = 0 - 2

V = 0 - 2

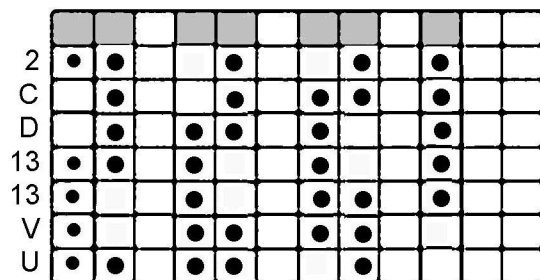
X = 0 - 2

Y = 0 - 2

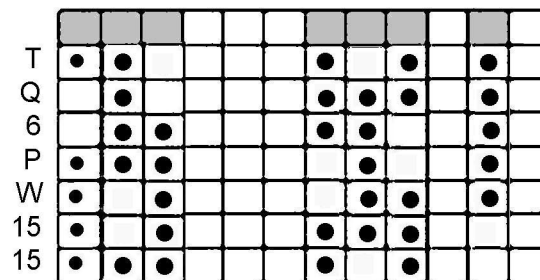
XX = 0 - 2

YY = 0 - 2

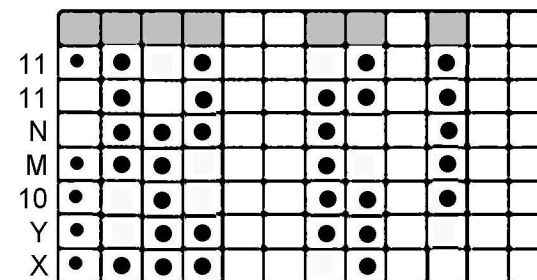
14H



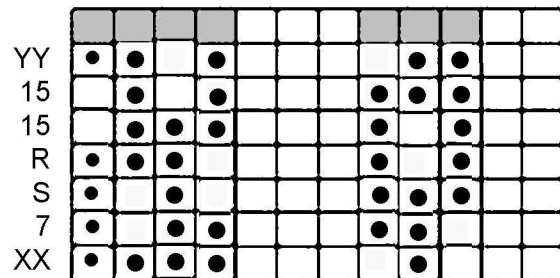
15H



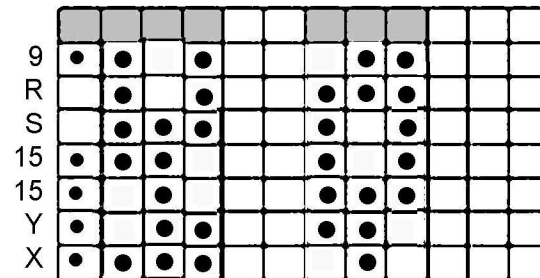
16H



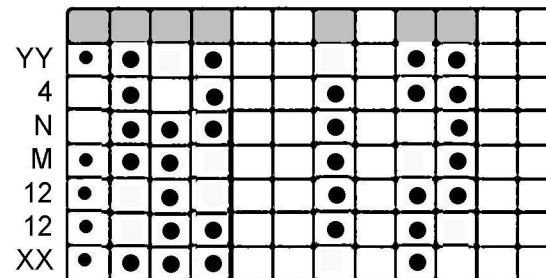
17H



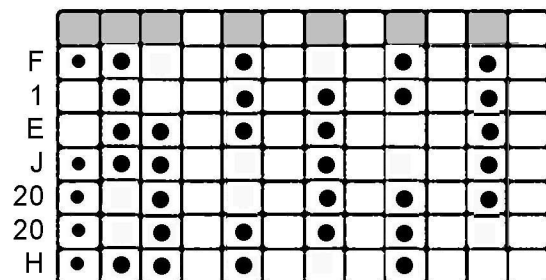
18H



19H



20H



of occurrences

1 = 3 - 1

5 = 1 - 1

9 = 0 - 1

13 = 2 - 4

2 = 1 - 1

6 = 0 - 1

10 = 2 - 1

14 = 2 - 4

3 = 1 - 1

7 = 0 - 1

11 = 2 - 2

15 = 0 - 6

4 = 2 - 1

8 = 1 - 1

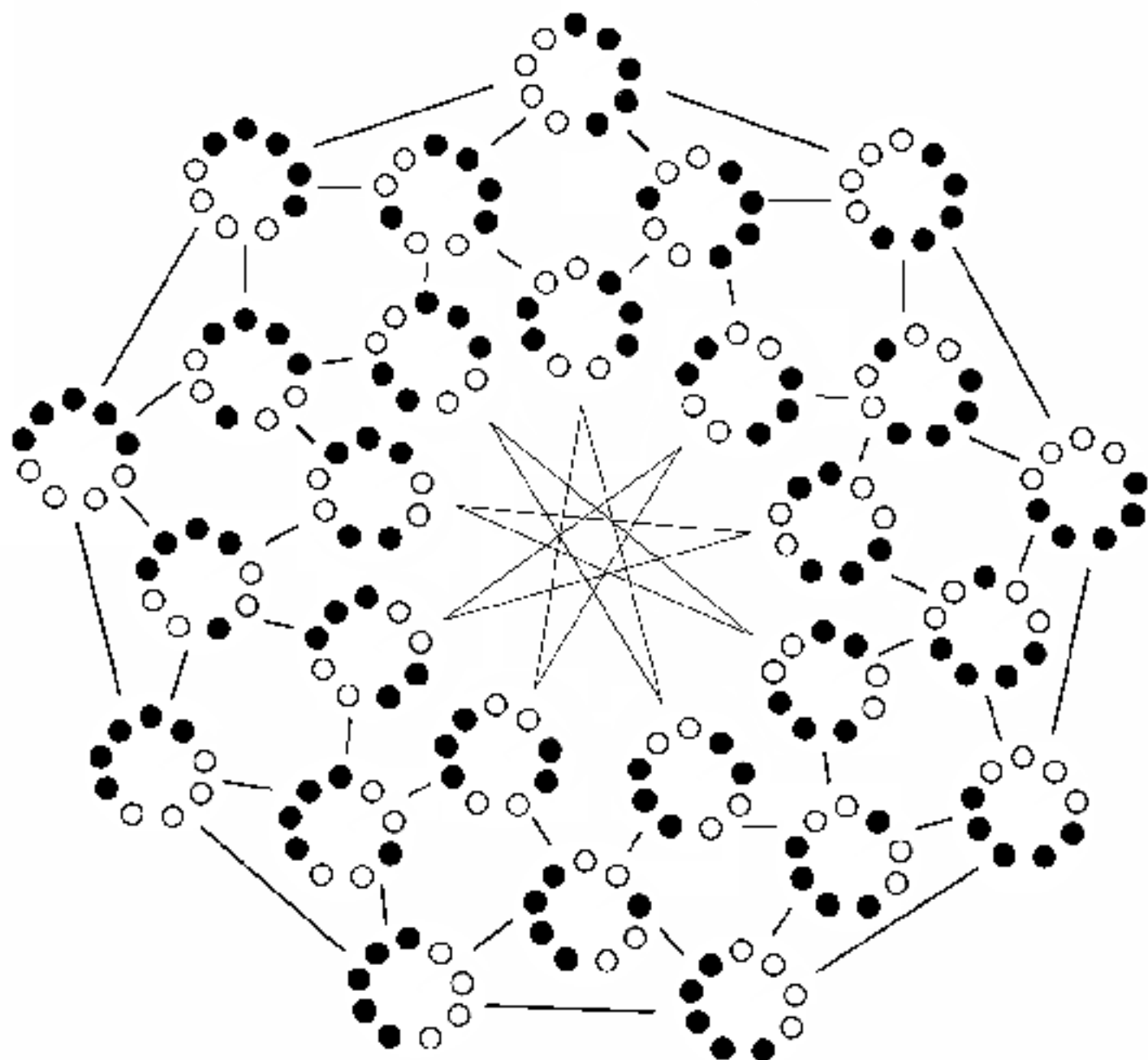
12 = 2 - 2

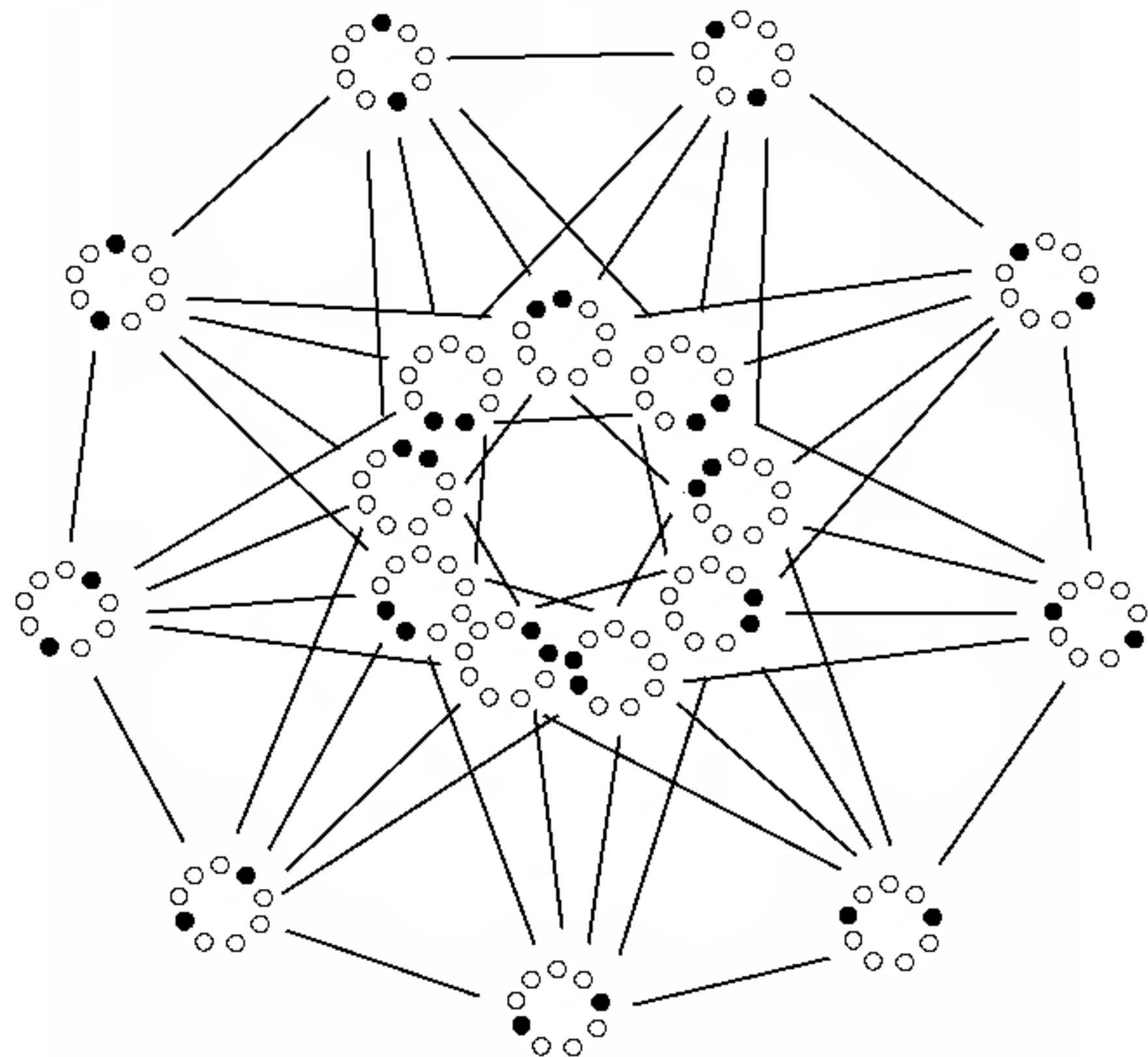
20 = 2 - 2

We can create some fun 9 tone cycles in a 12 tone scale in 4 different ways. Here are the cycles expressed in number of steps.

656565555 656556555 655656555 655655655

We can not only take the 5 and 7 tone subsets found in a row above to form scales, looking like a cycle of 4 units within this 9 but it is also possible to take the scales formed by taking 2 units out of nine [middle row]. This gives us the following 27 tone scales that is arranged to show the most common tone relationships. This chart was included on the back cover of my LP on the Ini Itu label. The last page shows these variations within the heptatonic scales.





KRAIG GRADY 8 MAY 2011